

Final Design for Making WCUMC Accessible
(22 December 2016)

During the past 18 months, the Accessibility Building Committee has worked diligently to come up with a design to make our church buildings more accessible to all members of our community. In the process of overcoming a number of unforeseen obstacles, the architectural firm ultimately had to come up with a fourth design (Plan D) that will enable us to install two independent vertical lift systems to increase access to all levels of our church. The Plan D design includes installation of the two vertical lifts, a new accessible bathroom located in the current lobby area, the installation of a ramp from the Vestry to the lobby to enable access to the new bathroom from the Sanctuary building without having to go outside, and the remodeling of the bathroom between two classrooms in the upper level of the Educational building to make it accessible. While the Plan D design is not significantly different from the Plan C design described in our July status report, we are providing this overview of the final design so our church community will know the complete scope of the work.

Figure 1 shows the location of the Educational building Lift, which has been moved from the Plan C design. With this new design, the stairs that go down to the basement will remain as they are. The lift will be installed where the current stairs are that go up to the second floor. To make room for the new stairs that go to/from the second floor, a portion of the entrance to the Women's Room will be used. This lift will have three stops: basement level for access to the kitchen and Fellowship Hall, lobby level for access to the new bathroom and the ramp to/from the Vestry, and upper level for access to the classrooms, offices, and the remodeled accessible bathroom.

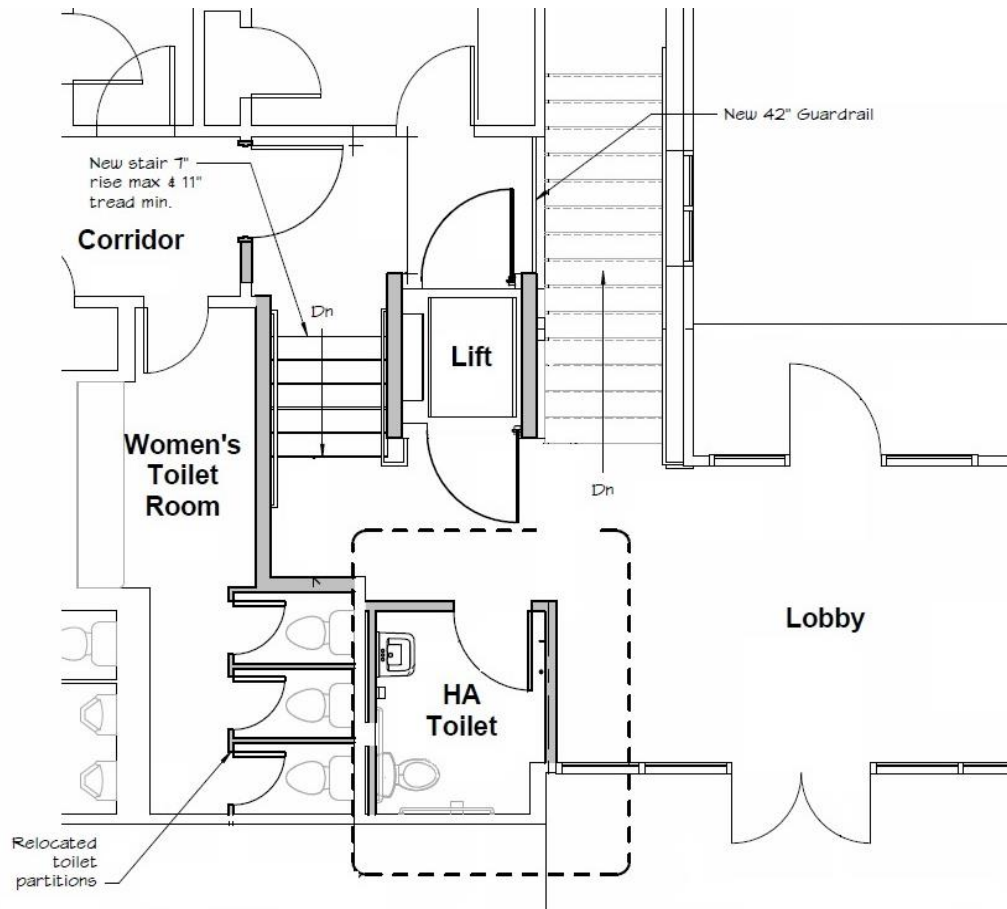


Figure 1. Educational Building Lift

Figure 1 also shows the changes to the Women's Bathroom that will be made to accommodate the new location of the lift. The three stalls will be relocated to the wall that faces the lobby, thereby providing an unobstructed path from the entry door the last stall.

Figure 2 shows the location of the Sanctuary Lift. As you enter the building through the front door, the lift will be installed on the left side where the current chair lift is. That set of stairs will be removed to make room for the lift, which will be accessed by a new door created in the side of the building with a concrete walkway leading to its entrance. To accommodate the installation of the lift, the center stairs that lead to/from the Vestry level will be narrowed, but remain within building code requirements. The current double door at the bottom of the center stairs leading to the Vestry will be removed and replaced with a single door that is recessed a few feet into the hallway. This lift will have three stops: entry level for access from the parking lot, Sanctuary level for access to church services, and Vestry level for access to that area and the ramp to the lobby.

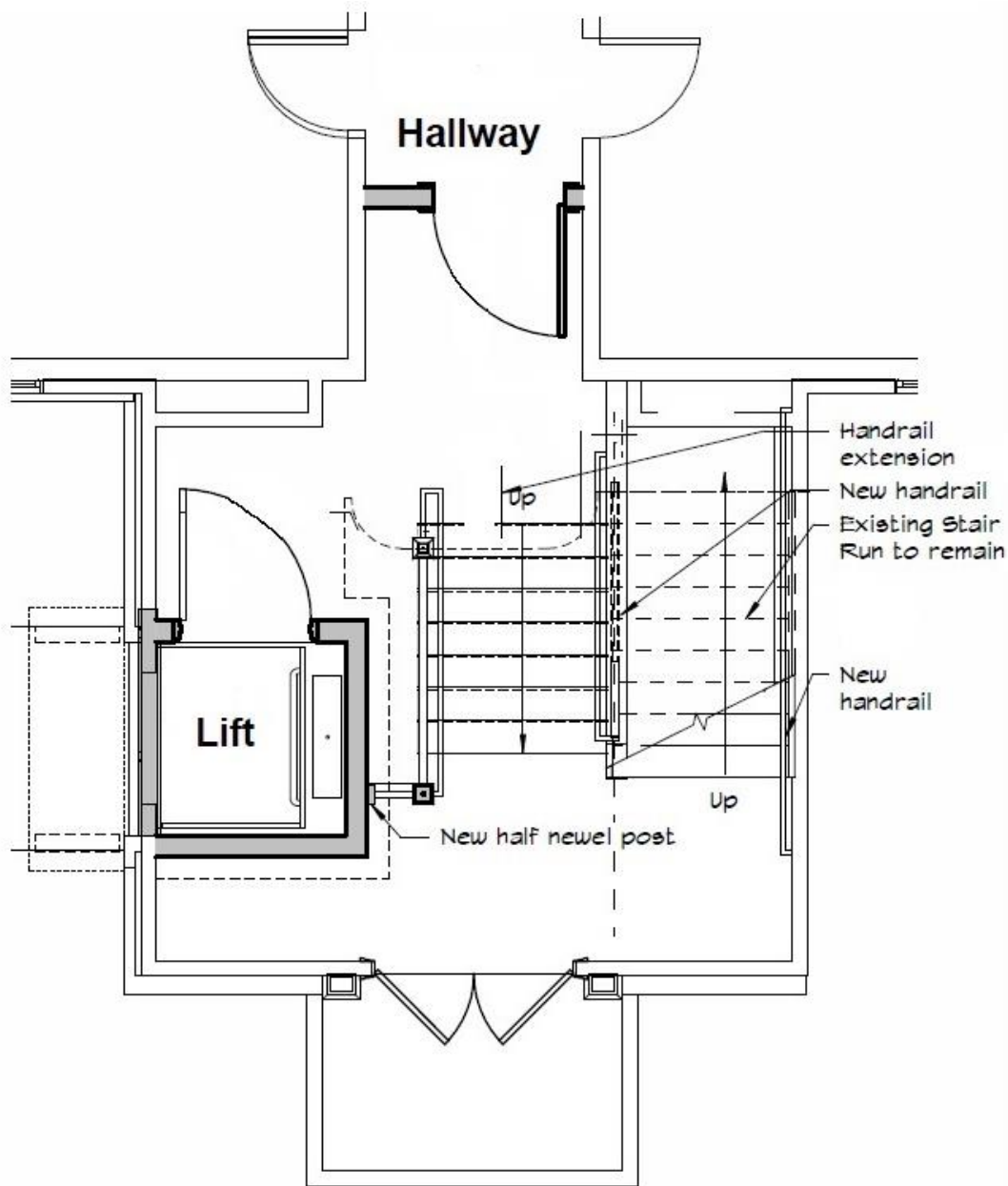


Figure 2. Sanctuary Lift

Figure 3 represents the architect's renderings of the how the lobby will look with the lift installed.

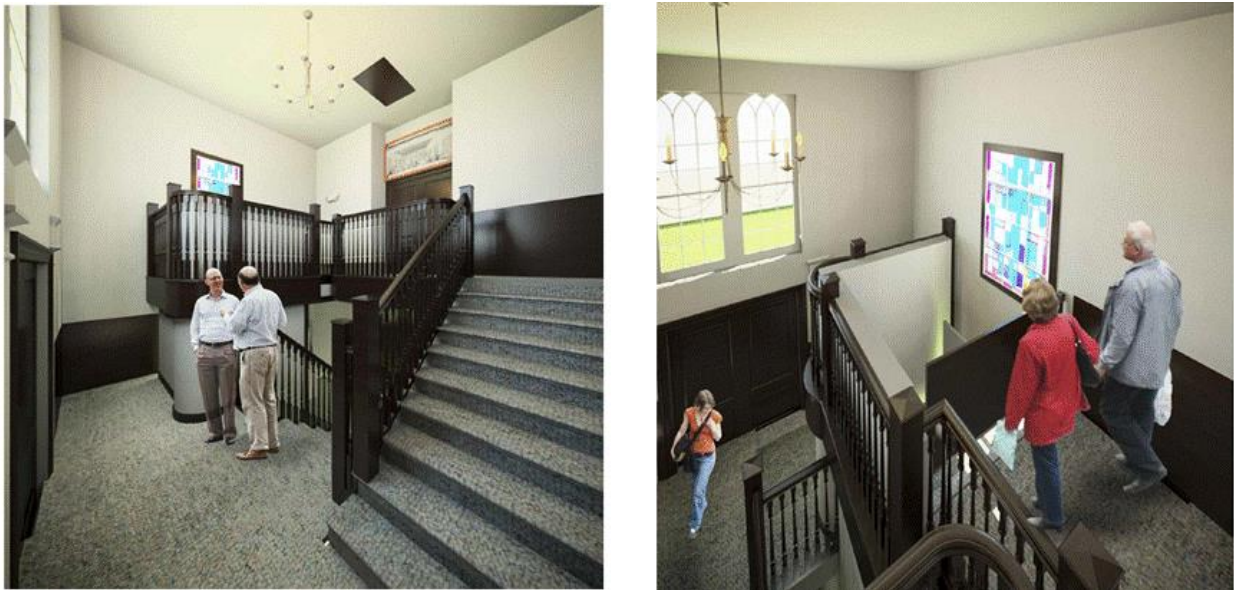


Figure 3. Architect's Renderings of the Narthex

Figure 4 shows the location of the new accessible bathroom in the lobby. This bathroom will be installed in the corner area by the stairs leading up to the Educational building. The installation of this bathroom will be simplified due to its proximity with the plumbing associated with the existing Women's bathroom in the Educational building.

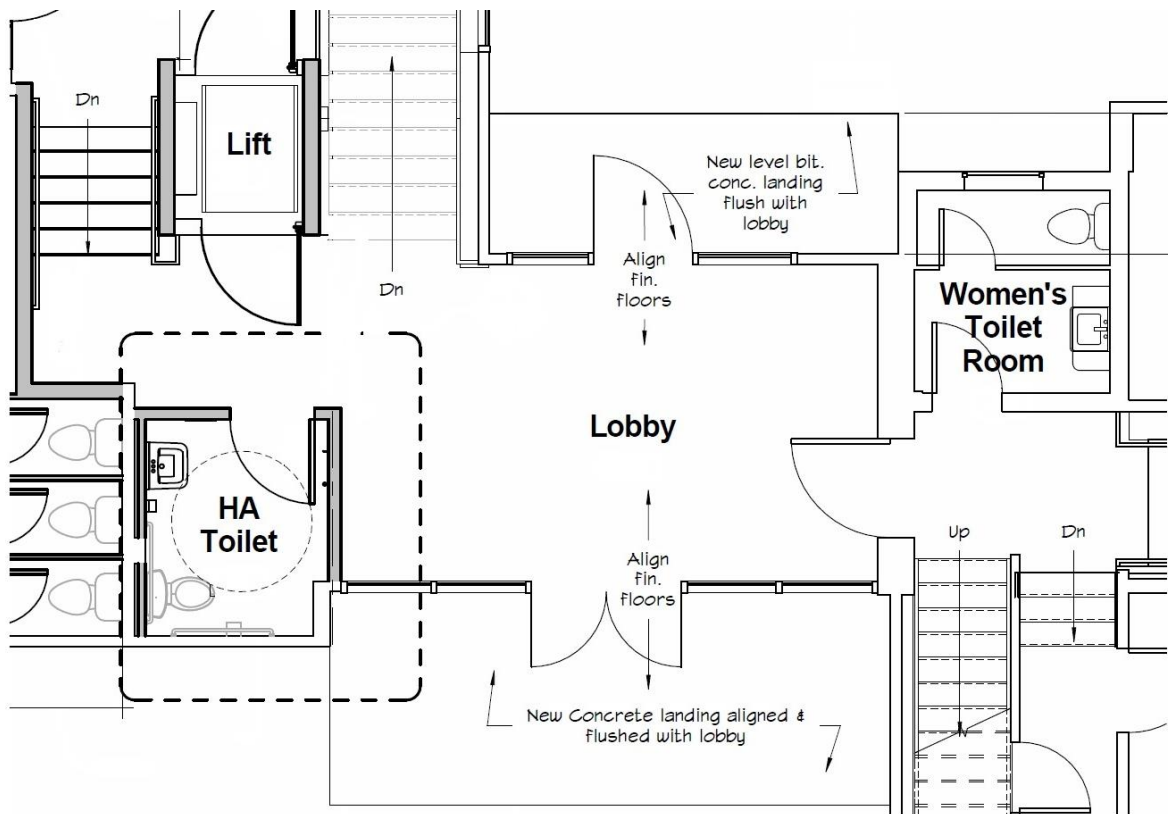


Figure 4. New Accessible Lobby Bathroom

Figure 5 shows the ramp that will be installed through the Vestry kitchen to provide a path between the Sanctuary building and the accessible bathroom in the lobby, and to the other lift in the Educational building. While installation of the ramp will mean the loss of the Men's Bathroom and the existing kitchen, space will be made for a small sink and under counter refrigerator in the Vestry.

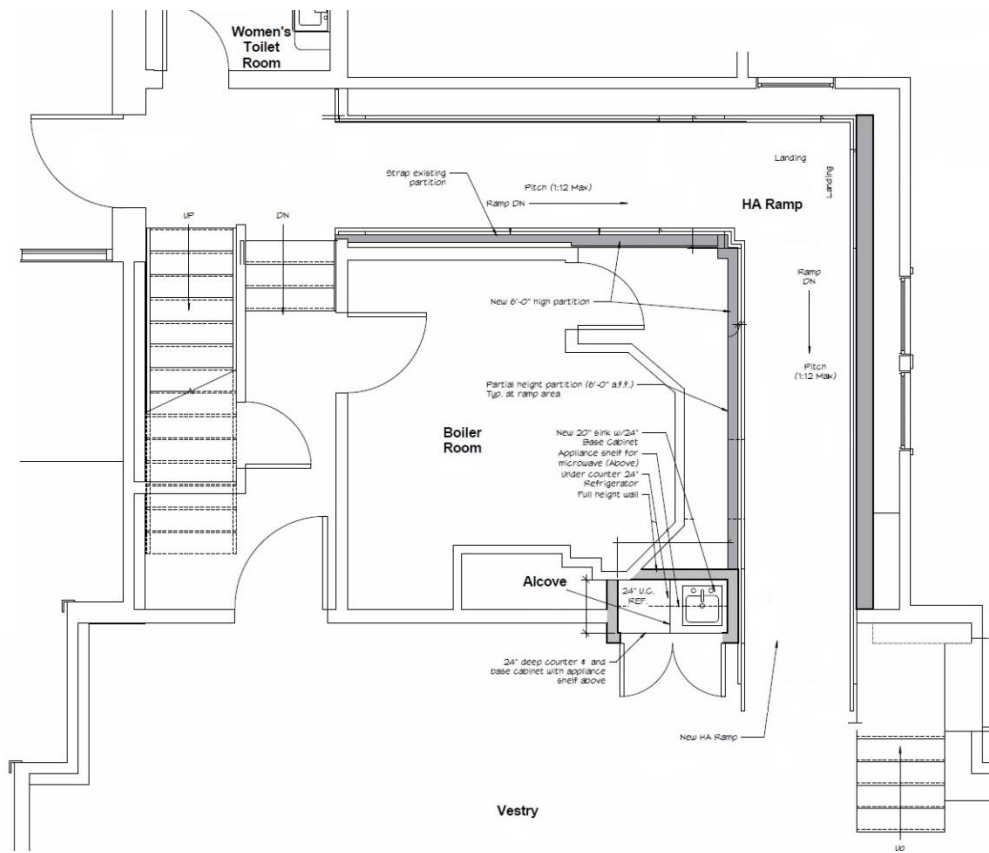


Figure 5. Ramp Between Vestry and Lobby

Figure 6 shows the location of the existing bathroom that will be remodeled to be accessible. Remodeling this bathroom on the second floor of the Educational building will enable us to better serve the needs of our Sunday School, while providing a second accessible bathroom for our church.

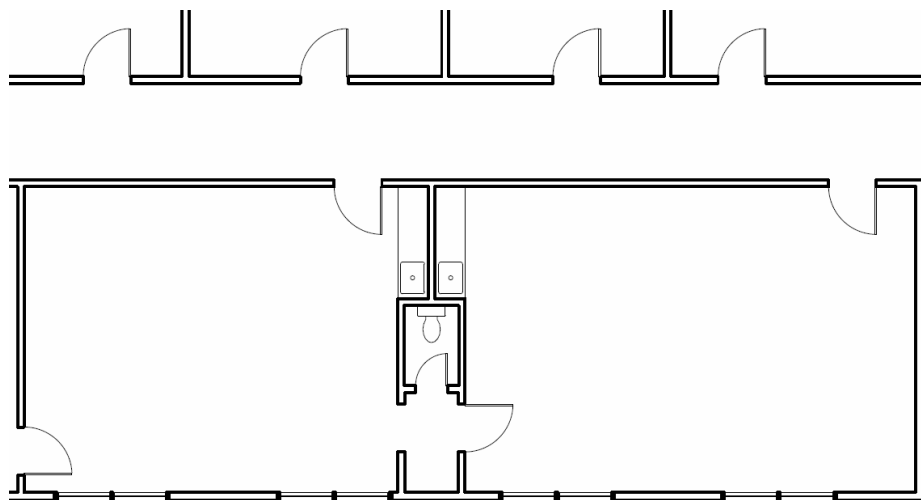


Figure 6. Bathroom in Classroom Area